

AUTOMATED & RIGGED DROPS

# ADC 280 Traveler Track Installation Instructions

---

Installation instructions for hand operated silent steel ADC heavy duty curtain track

## Set up Instructions

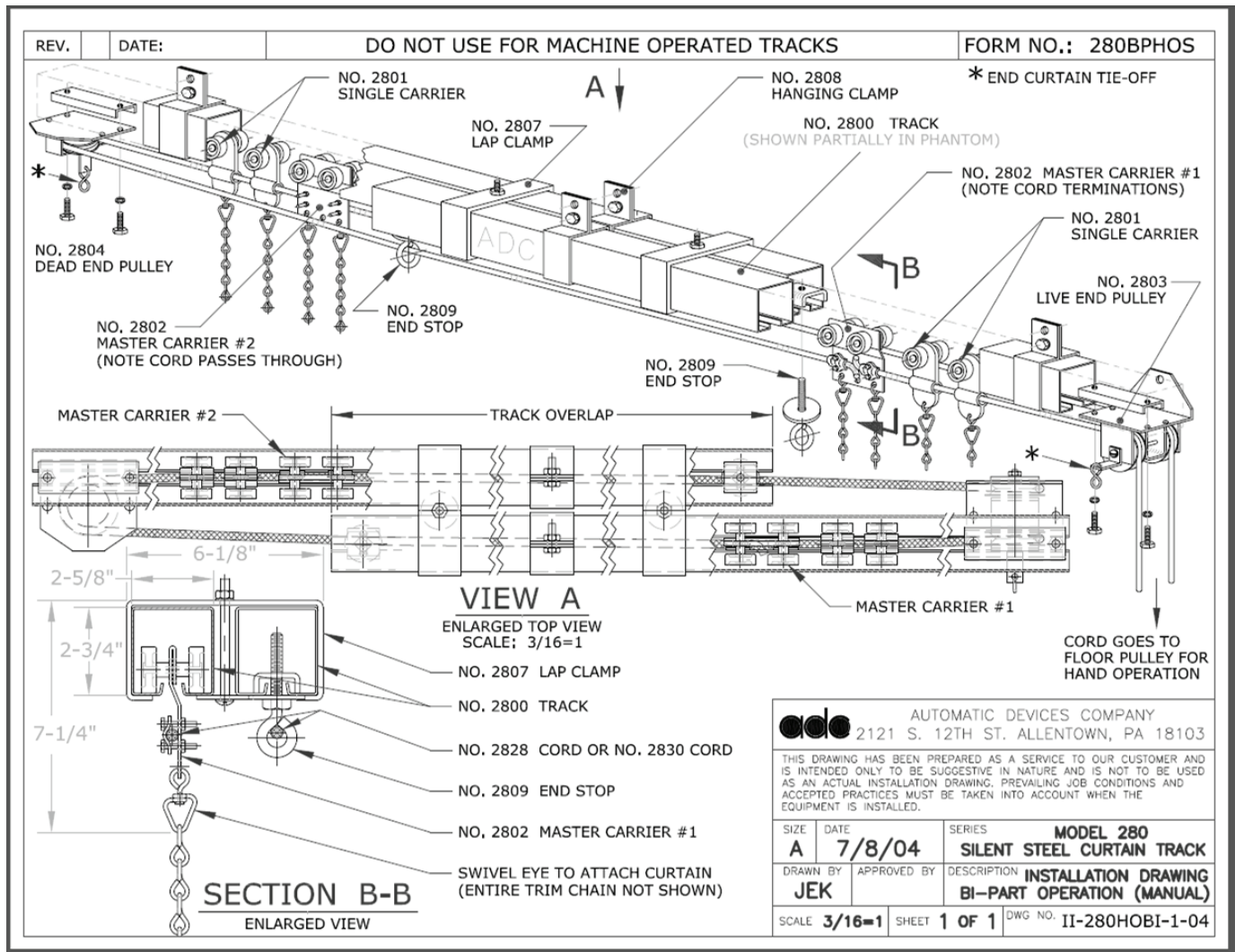
1. Lay the two track halves on the floor with the track slot facing down and with the amount of center overlap desired for final installation. If splicing is required, it should be done at this time. Splicing is accomplished via bolts through tubes mounted to the side of the tracks. Attach the two lap clamps to the tracks at the overlap with the hardware provided.
2. Alternatively, overlapping master-carriers can be used to create a center curtain overlap without center overlapping track sections.
3. Install the live-end and dead-end pulleys to the end of the tracks and secure with the hardware provided.
4. Secure the hanging clamps along the track sections at maximum 7' intervals. Raise the track to its permanent position and secure in place. Mount the floor pulley to the floor directly under and aligned with the track live end pulley.
5. Insert an equal amount of single carriers into each section of track. The carriers can be inserted at the open track ends located at the center overlap. Insert the master carriers into the track sections. Install the eye-bolt end stops to the open track ends at the overlap and secure. Ensure the leg is completely into the corner post.
6. Thread the operating cord through one wheel of the live-end pulley, through the holes in the carriers, the cord connectors of the master carrier and the eyebolt of the end stop. Run the cord around the dead-end pulley and through the single carriers of the other half of track and through one of the cord connectors of the second master carrier. Loosely secure this end of the cable to the master with the cord connector. Thread the remaining end of the operating cable through the floor pulley, up and through the remaining wheel of the live end pulley, through the eye-bolt of the second section of track and to the remaining cord connector of the second master carrier. Loosely secure this end of the cable to the master carrier.
7. Snap one rubber spacer on the inside edge (edge facing the master carrier) of each single carrier, just above the cord hole.
8. Move the master carriers an equal distance from the pulley ends of their track sections. Remove the slack from the cord at the master carrier with the free ends of cord and secure the cord at both masters with the cord connectors provided. Cut off the excess cord.



**Info and Tips**

Some important notes for ACD Traveler Track installation:

- Never use less than five suspension points. The track should be supported at its ends.
- Support the live end pulley to the overhead structure using the hole provided on the pulley.
- Support media should be chain, steel members, or wire cable. Never use rope. .
- One-way operating curtains require only one master carrier and do not have an overlap. The rest of the rigging procedure and hardware is the same as with a center opening, bipart curtain.



Note diagram shows overlapping tracks, it is also possible to use overlapping master carriers and a single track