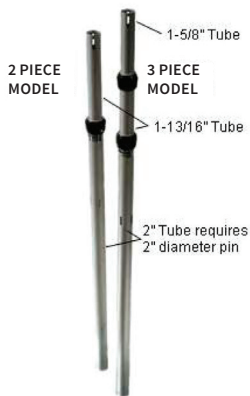


SOFT GOODS

# Pole & Drape Assembly Instructions

---

The SLIP-LOCK collar assembly locks automatically when the inner pole is raised vertically to the desired height. As a vertical load is applied downward, the ball-taper lock feature locks tighter. The more pressure applied downward the tighter it will lock. No tools required.



## Adjustable Uprights

To release the lock, simply raise the inner pole slightly and lift the release ring. For SAFETY, hold the inner pole firmly while raising or lowering the height.

### **Example: Model No. 9'-16' (2 Piece)**

Minimum collapsed height: 9' (off base assembly)

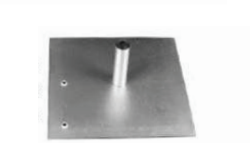
Minimum set height: 9'6" (on base assembly with 6" pin)

Maximum set height: 16' (on base assembly with 6" pin)



## Extensions

Upright heights can be temporarily increased by installing extensions of various heights.



## Bases

24" x 24" Comes with 3 pin holes Lightweight or Heavy Duty Available .



## Shelf Hanger Brackets

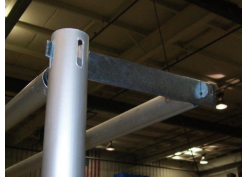
Can be used to add crossarms perpendicularly to other crossarms without the use of another upright.





### Valence Brackets

Can be used to add signage or drapes directly in front of a curtain



COMBINATION CONVERTER PIN	
DIAMETER	LENGTH
2"	6"
2"	8"



CROSS ARM

HOOK DESIGN

### Instructions

1. Clear the area where booth or wall will be placed
2. Place bases on floor, attach pin in desired location
3. Place Upright over pin Put drape on the cross-arm
4. Put cross arm in upright slots
5. Put all cross arms and drape in uprights at a low position before raising the upright
6. To prevent system from binding, raise each upright within the system a foot at a time. Repeat raising them at one foot increments or less until desired height is reached. (see slip-lock explanation for more detail on operating the upright)



FINISHED BOOTH SET-UP

