

Chicago Skyline 1 (2-D) Info Sheet  
Note seams are vertical unless noted.

Unit A

8' wide x 12' tall  
2 pieces  
2 light boxes

Unit B

8' wide x 12' tall  
2 pieces  
3 light boxes

Unit C

8' wide x 12' tall  
2 pieces  
1 light box

Unit D

16' wide x 16' tall  
4 pieces  
4 light boxes

Unit E

8' wide x 12' tall  
2 pieces  
1 light box

Unit F

16' wide x 16' tall  
4 pieces  
6 light boxes

Unit G

6' wide x 20' tall  
2 pieces (horizontal seam)  
3 light boxes

Unit H

6' wide x 20' tall  
2 pieces (horizontal seam)  
2 light boxes

General Notes:

All units connect via loose pin hinges  
Jacks necessary to brace units

Together

com

Building the  
Together

comcast

Building the Future  
Together

comcast.



comcast

Building the Future  
Together

comcast

Building the Future  
Together

comcast

Building the Future  
Together

comcast.



comcast

Building the Future  
Together

comcast

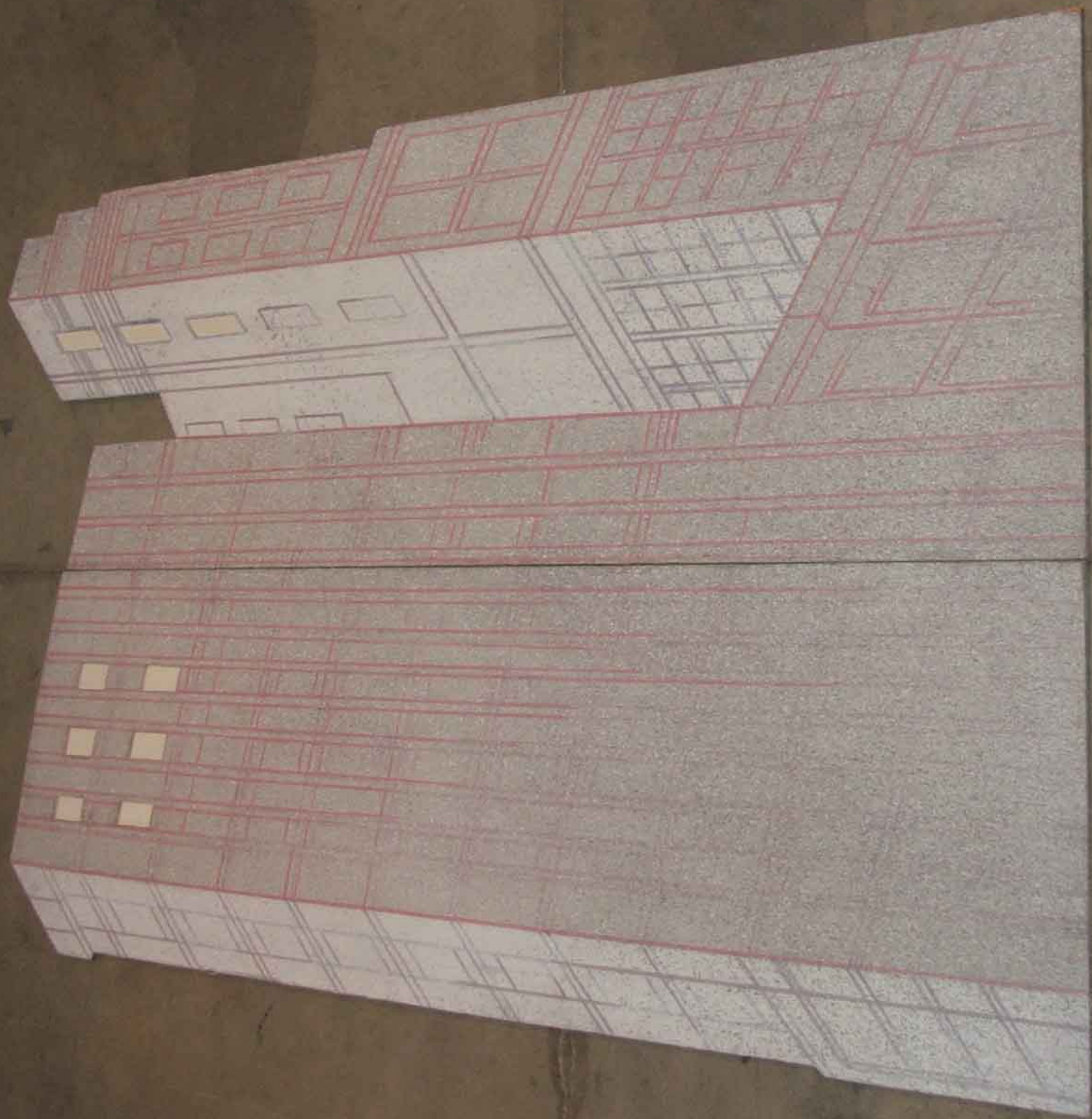
Building the Future  
Together

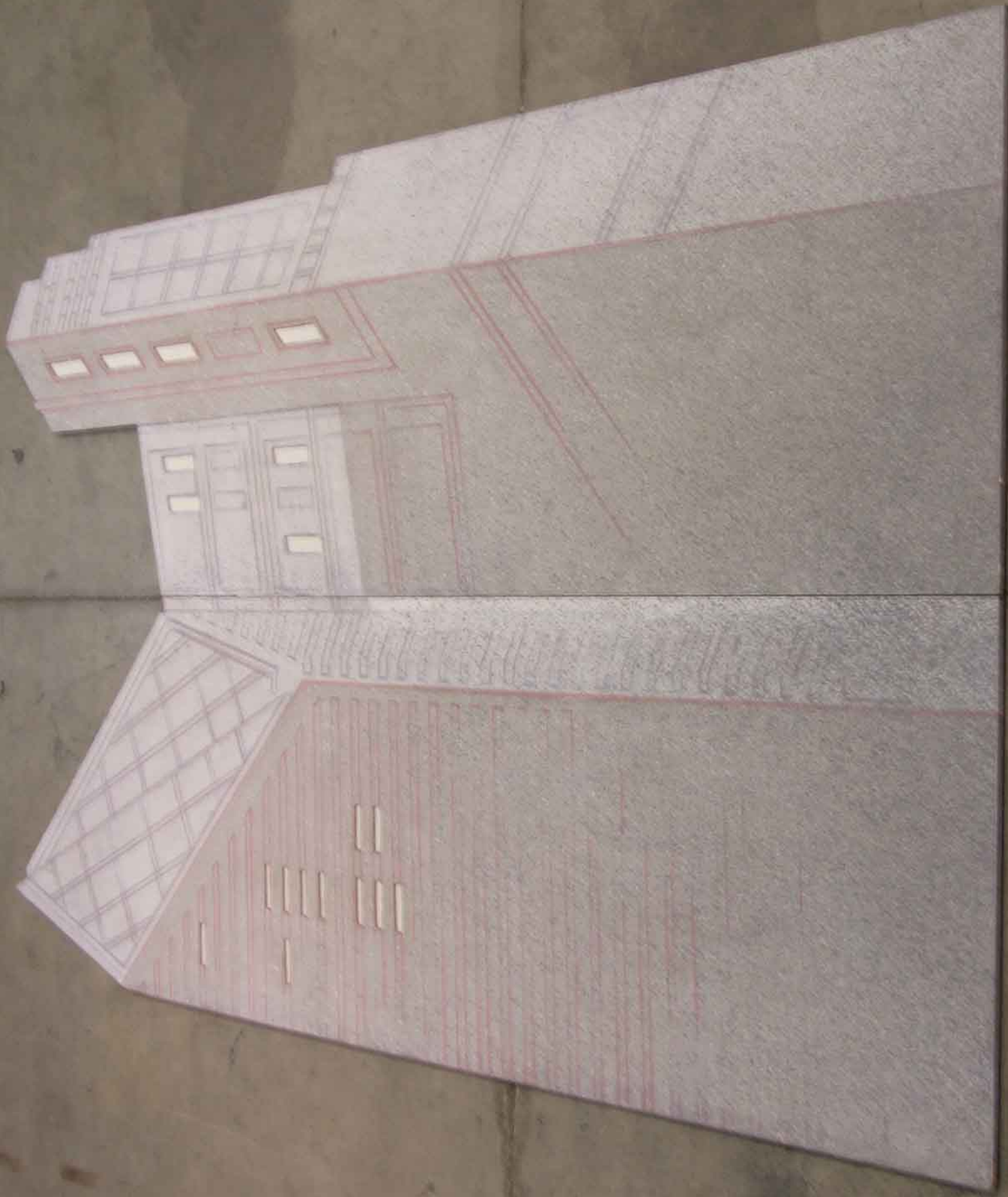
comcast

Building the Future  
Together

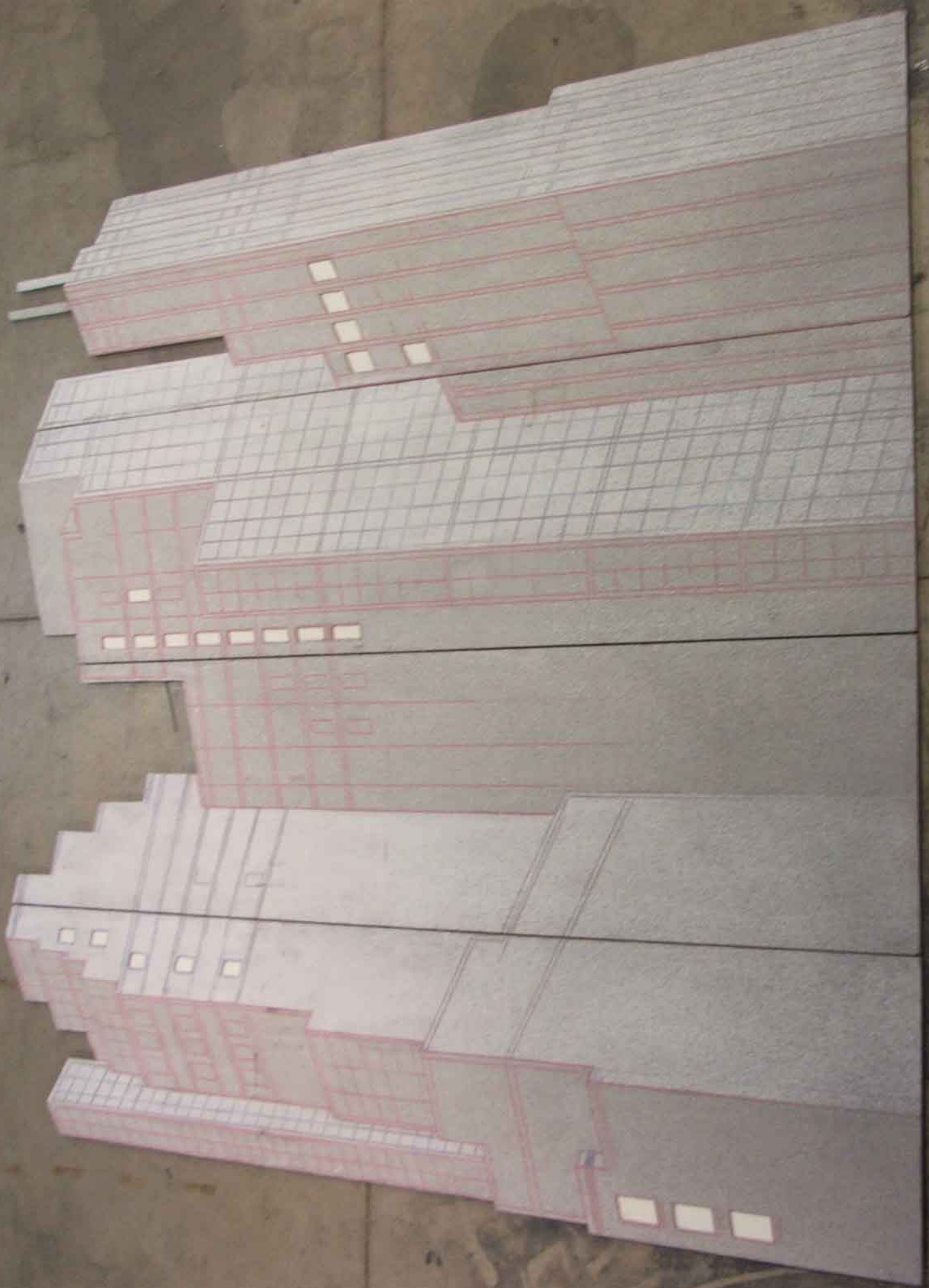
comcast.

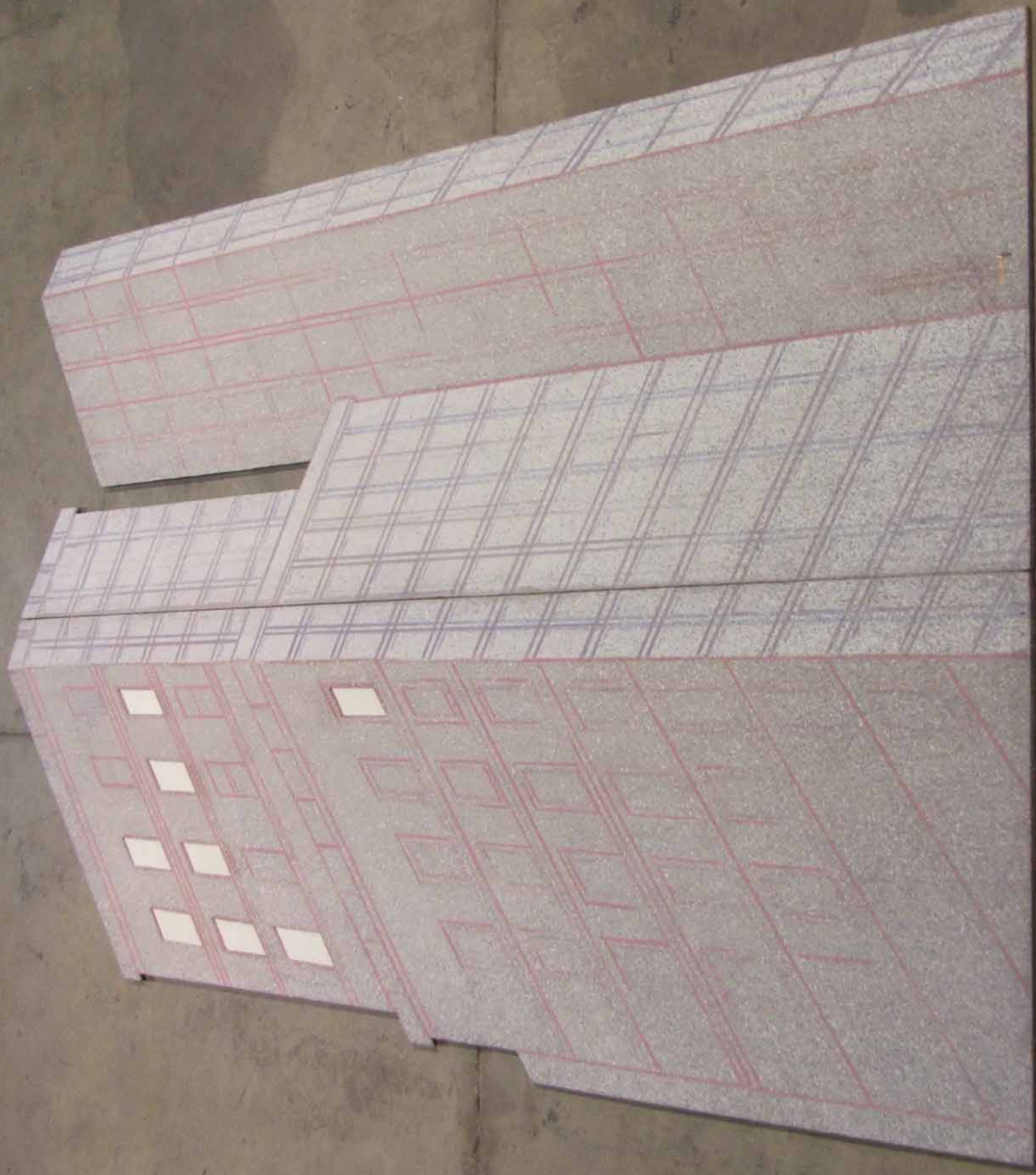




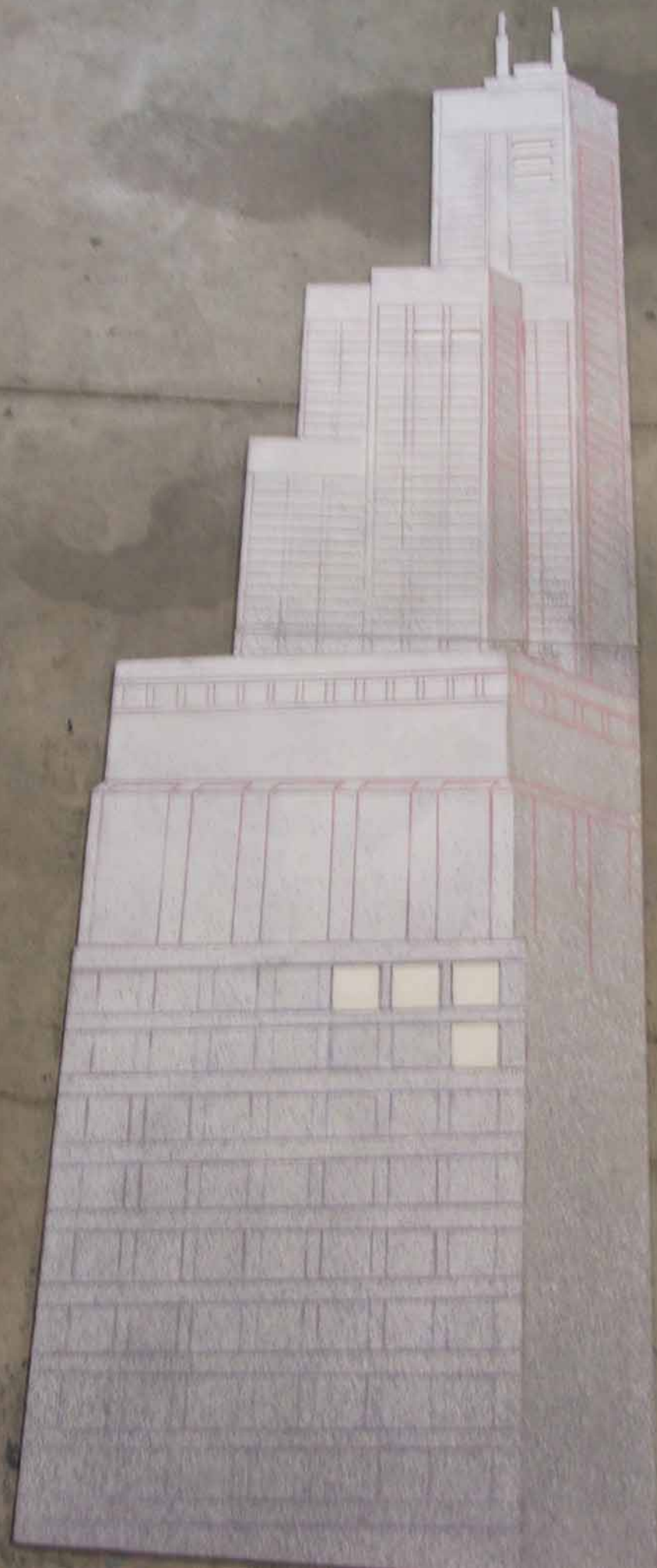


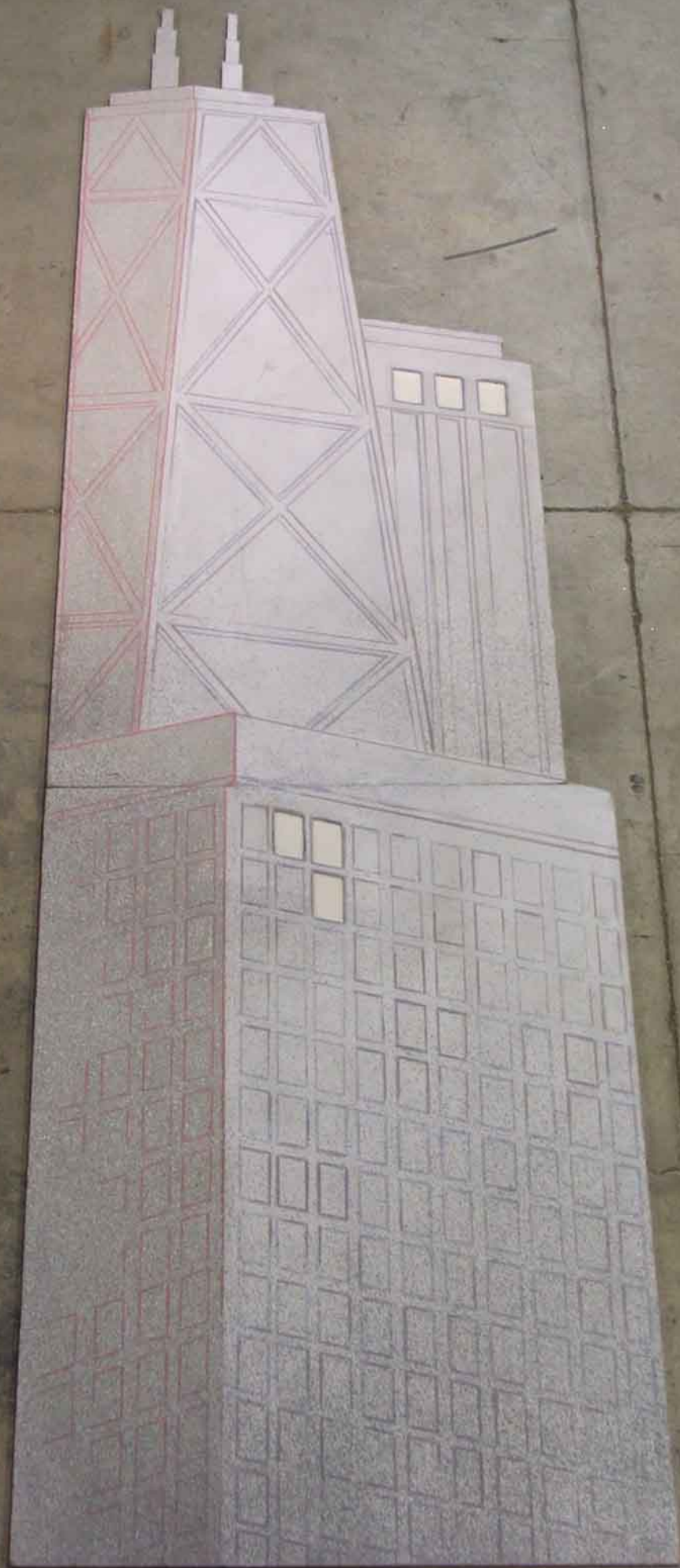


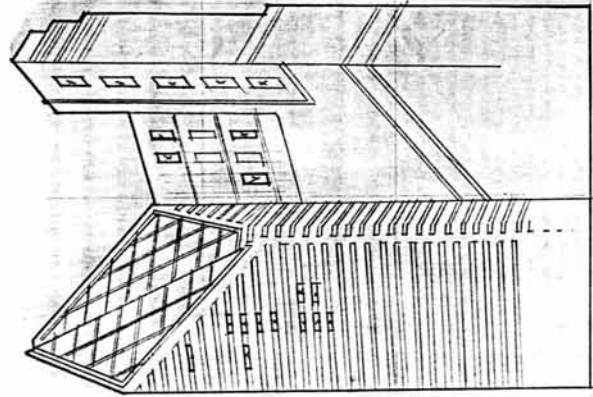




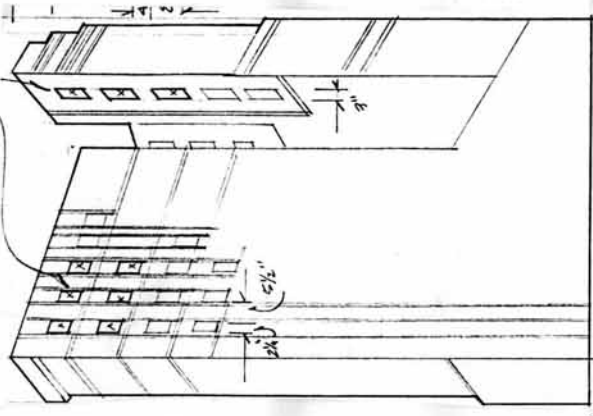




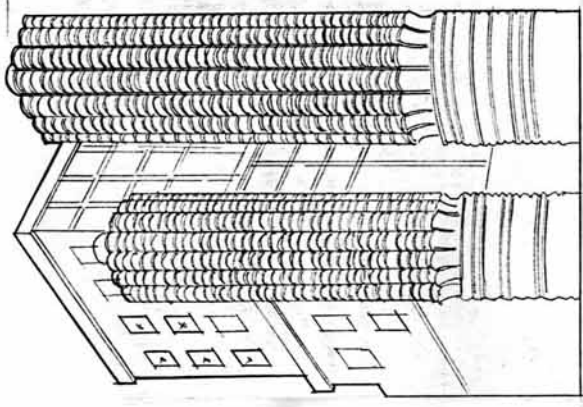




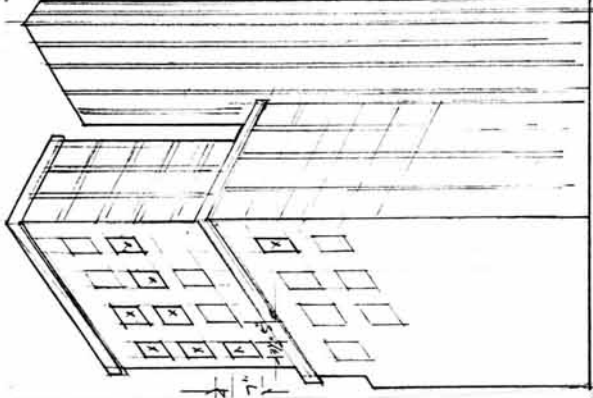
B.  
8'W x 12'H



A.  
8'W x 12'H

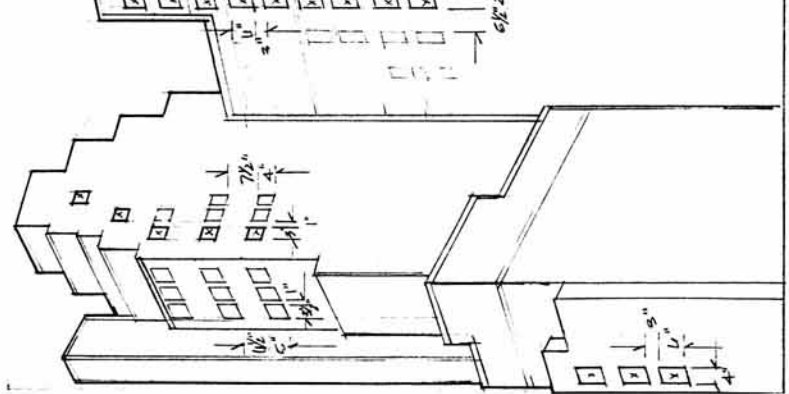
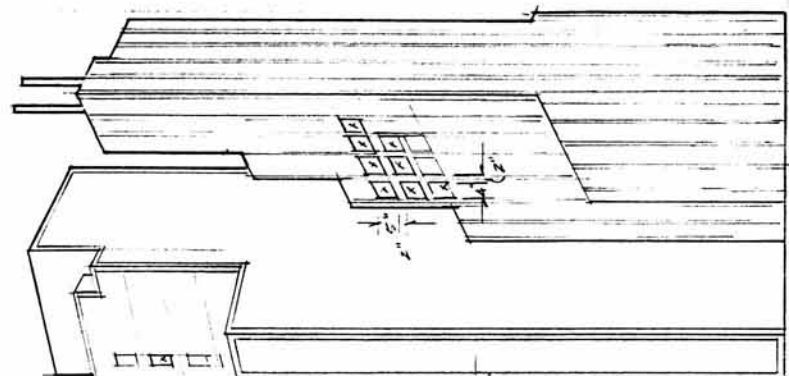
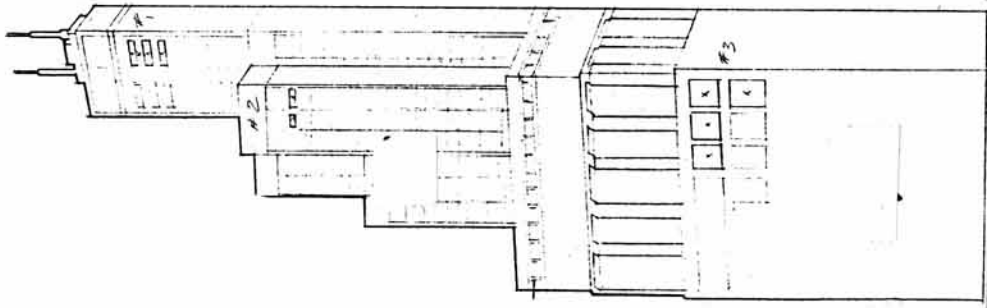


C.  
8'W x 12'W



E.  
8'W x 12'H

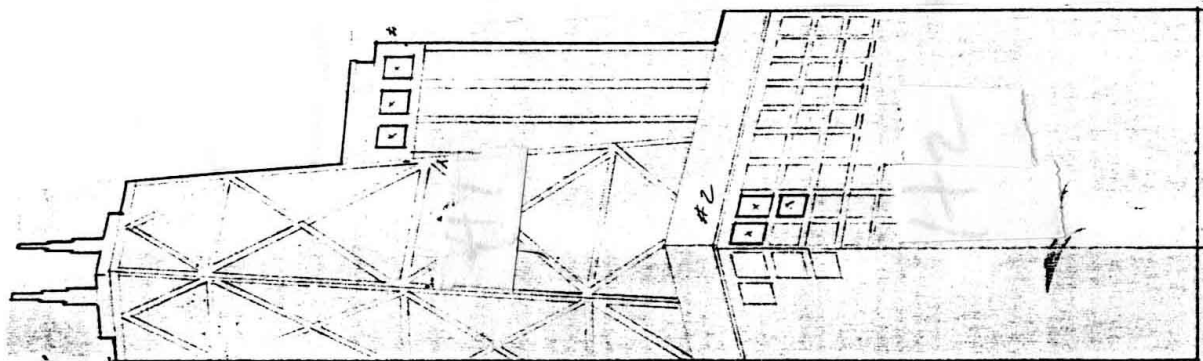
SCALE 1/4" = 1'-0"



G.  
6' W x 20' H

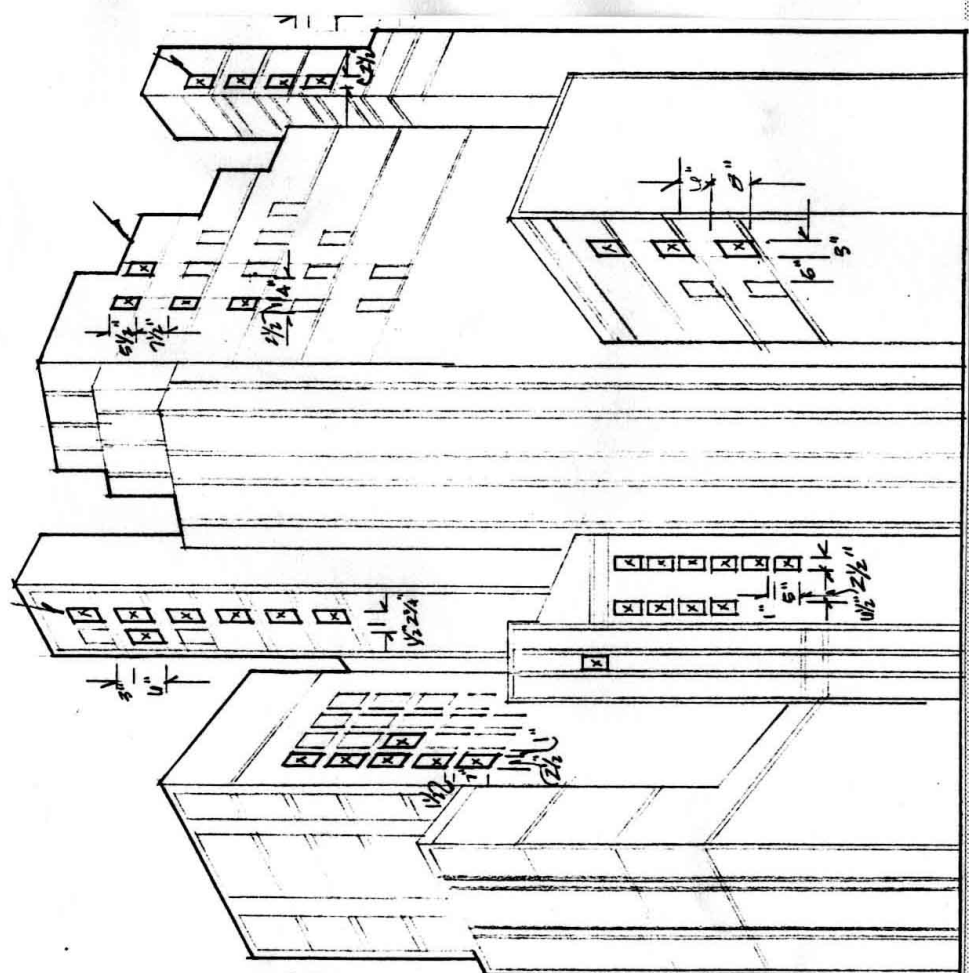
D.  
16' W x 16' H

SCALE 1/4" = 1'-0"



H. 20' H  
 6' W x 20' H

SCALE 1/4" = 1'-0"



F. 16' W x 16' H